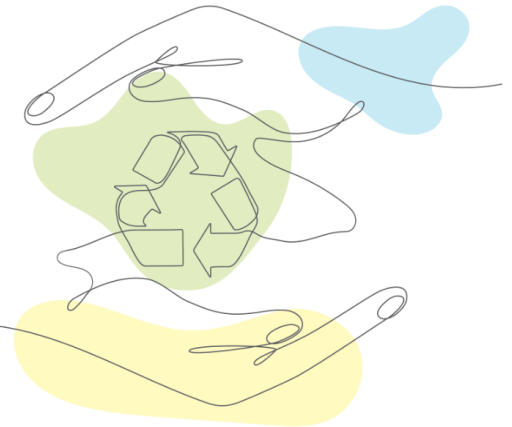


Recyclability

As a solution to increase recycling efficiency, it is aimed to convert packaging from multi-material films to mono-material.



RECYCLABLE PACKS

MONO PE

- MDO PE / PE
- BOPE / PE
- HDPE / PE
- PEX / PE

MONO PE

It has wider potential application areas and specially designed packaging lines are needed.

MONO PP

- OPP / OPP
- OPP / CPP
- OPP / AlO_x / CPP
- OPP / PPX
- OPP / PPX / MET
- OPP

MONO PP

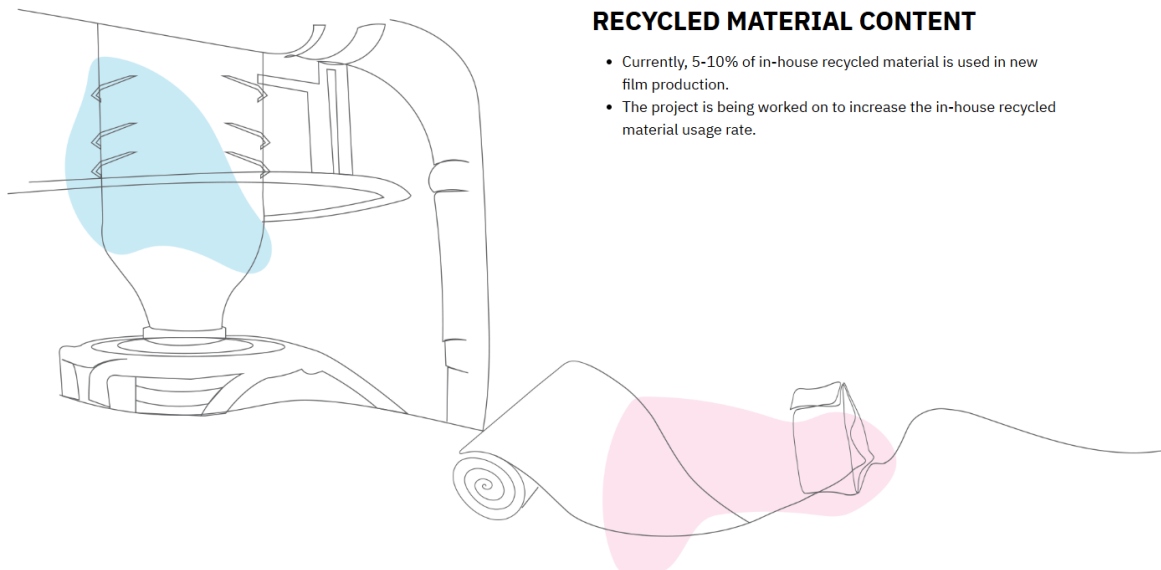
Easier to integrate to industry with present packaging lines

MONO POLIOLEFIN

- OPP / PE
- OPP / MET
- OPP / PE

MONO POLIOLEFIN

Widely spread in market but there is no efficient separation process for recycling.



RECYCLED MATERIAL CONTENT

- Currently, 5-10% of in-house recycled material is used in new film production.
- The project is being worked on to increase the in-house recycled material usage rate.